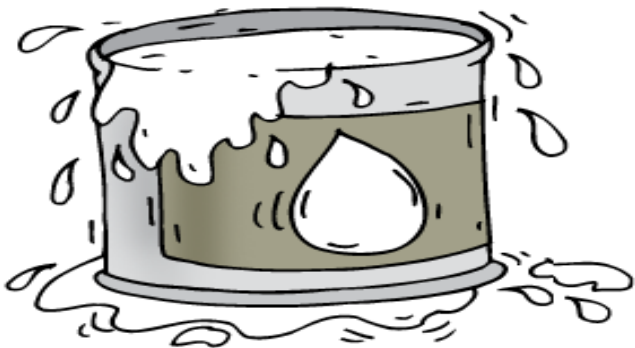
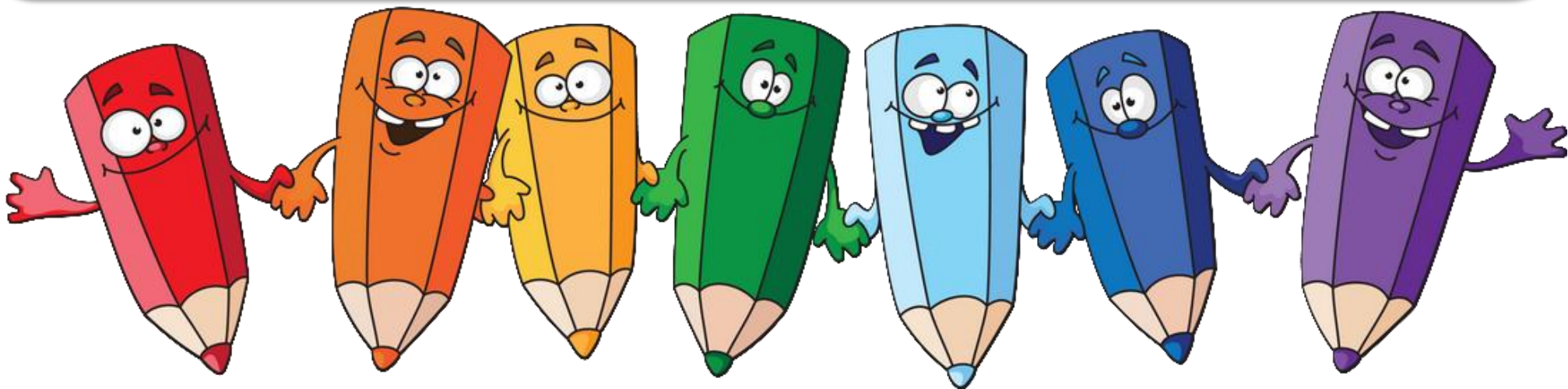




les couleurs

IPOTÂME



blanc



IPOTÂME



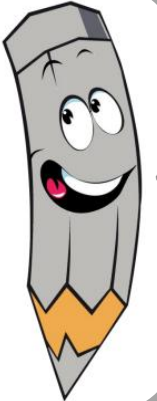
jaune



IPOTĂME



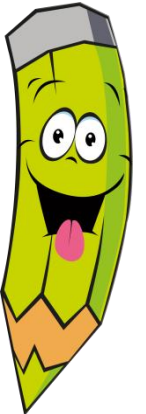
gris



IPOTĂME



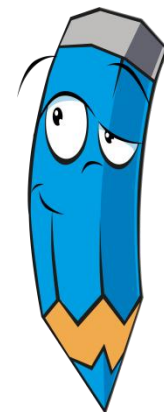
vert



IPOTĂME



bleu



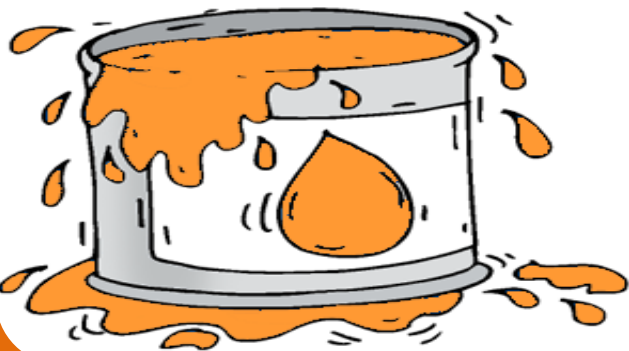
IPOT&MÉ



noir



IPOT&MÉ



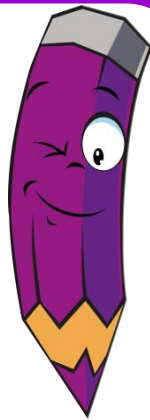
orange



IPOT&MÉ



violet



IPOT&MÉ



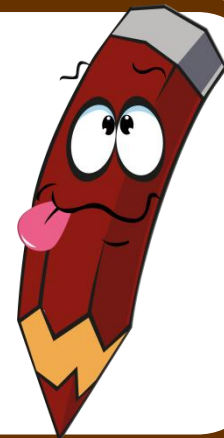
rouge



IPOT&MÉ



marron



IPOT&MÉ



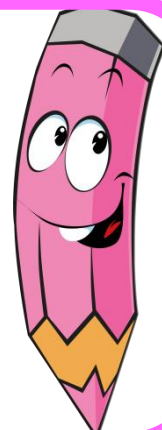
bleu foncé



IPOTAME



rose



IPOTAME



vert foncé



IPOTAME

images des pots de peintures : <http://www.art4apps.org/>

pour les crayons qui se donnent la main : <http://zezete2.centerblog.net/rub--crayons-stylos-.html>

images des crayons : : [www.librairie-interactive.com/i](http://www.librairie-interactive.com/i)